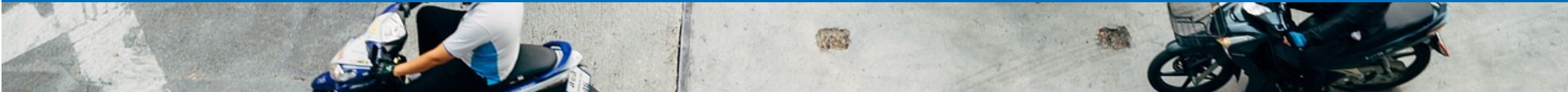




FuelXcite

ECO Power solutions 
ENVIRONMENT OPTIMIZATION





FuelXcite

The paradigm shift in **saving fuel on combast engines!**

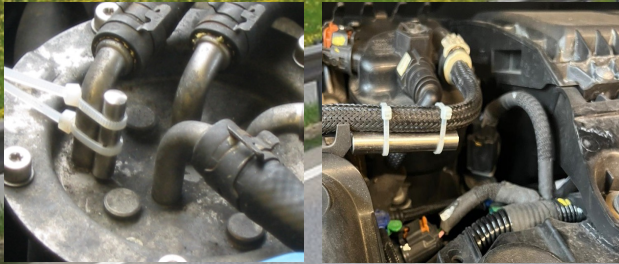
The world's **most cost-effective fuel saving device!**

The ECOPower **FuelXcite reduces** the fuel consumption **up to 30%**





FuelXcite

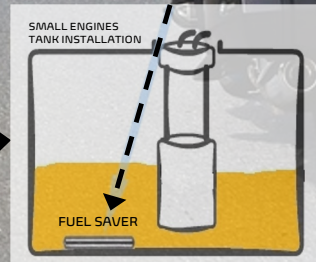


Installation is simple.
Simply drop the **FuelXcite** into the tank for small petrol or diesel engines.
For diesel cars mount it on top of the main diesel line.

FIT IT



& LEAVE IT

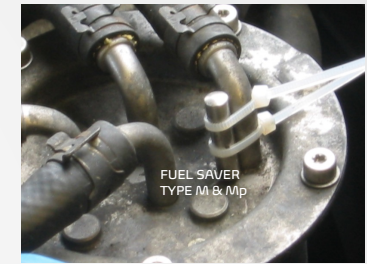
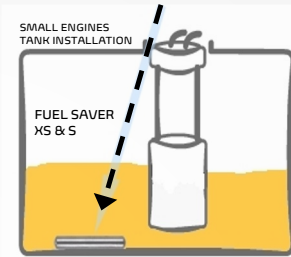
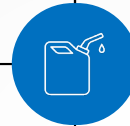


It takes about 4-6 tank fillings for the **FuelXcite** to reach the maximum effect.

The FuelXcite device usage and instructions!

USAGE AND STRUCTURE

The ECOPower FuelXcite can be used from -100 to +600 degrees on small petrol engines or any diesel vehicle. The low-atom structure is modified using a special process so that the pin can act as a vibration carrier.



FUEL SAVER INSTRUCTIONS

- **WE RECOMMEND TANK INSTALLATION FOR MOPED, SMALL MOTOR BIKES, TUK- TUKS, BOATS, CHAIN SAWS, LAWN MOWERS, AND LAWN TRIMMER.**

Tank installation provides the best contact to the fuel. The ECOPower FuelXcite should stay on the bottom of the tank after installation.

- **LINE INSTALLATION FOR CARS WITH ECOPower FuelXcite M and Mp-TYPE:**

The best ECOPower FuelXcite line installation location for cars shall be a section of the Diesel fuel line with very low insulation thickness!

MODE OF ACTION

Fuels such as petrol and diesel are hydrocarbons that not only C-H bonds but also C-C (shown in black) bonds.

No oxygen O can accumulate on the C-C bonds, which is why these bonds are found in the exhaust gas as soot (carbon).



DETAILS ON HOW IT WORKS

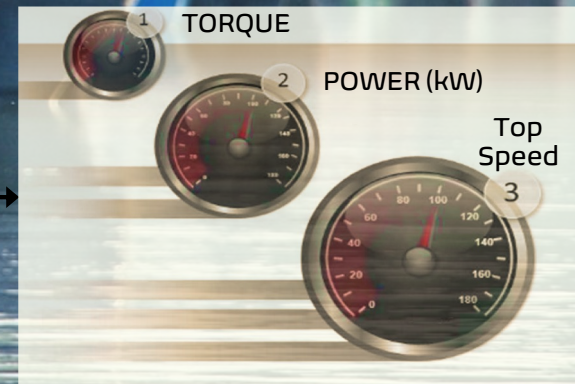
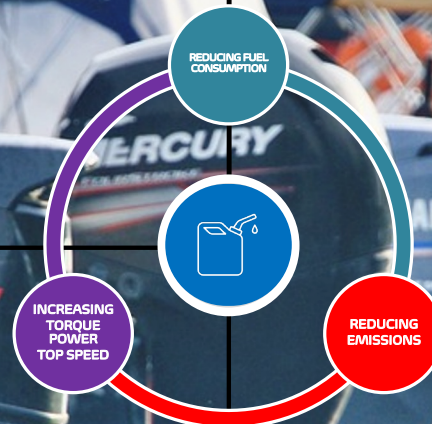
The ECOPower-FuelXcite uses special oscillation processes to bring the electrons in the C-C and C-H connection to a higher energetic level.

As a result, fuels are pre-treated in such a way that they are broken down (cracked) into ionized gases in the combustion chamber.

A partial plasma is formed.



REDUCTION TYPES	REDUCTION
2- STROKE SMALL PETROL ENGINE	10 - 40 %
4- STROKE SMALL PETROL ENGINE	10 - 20 %
DIESEL COSUMPTION	8 - 20 %
CARBON MONOXIDE (CO)	up to 98 %
SOOT PARTICLES	up to 86 %
HYDRO CARBONS (HC)	up to 50 %



Advantages that speak for themselves

FuelXcite 

Easy installation

Tank- or Line installation.



> FIT IT & LEAVE IT!

No maintenance requirements

For as long as the **FuelXcite** remain at the tank or on the main fuel line.



> NO MAINTENANCE

Lifetime 20 years

It takes about 4-6 tank fillings for the FuelXcite to reach the maximum effect.

> Lifetime 20 years

Protecting the climate

Reducing Carbon Monoxide (CO) up to 98%
Reducing Soot particles up to 86%
Reducing Hydro carbons (HC) up to 50%

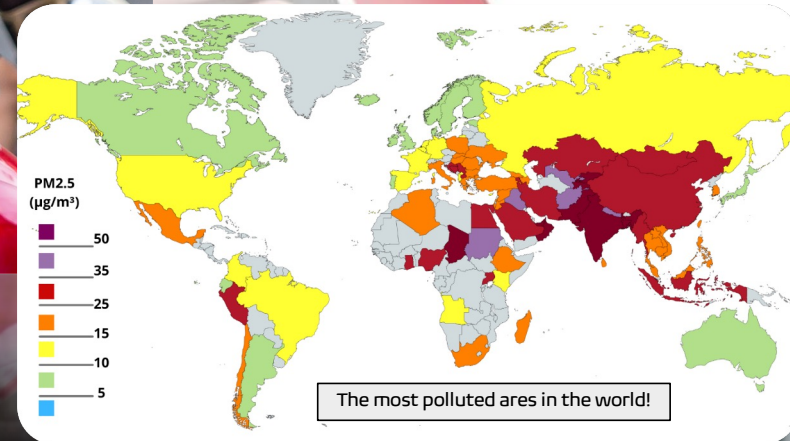
> Unique emissions reducing!

FuelXcite



Protect the environment

let's get fresh air again!



ECO Power solutions 
ENVIRONMENT OPTIMIZATION

FuelXcite



REDUCING CO²

TYPE	SAVINGS	CO ₂
Petrol 1 Liter	-	2,37 KG
FuelXcite	10%	0,237 KG/Liter
FuelXcite	30%	0,711 KG/Liter
Diesel 1 Liter	-	2,65 KG
FuelXcite	10%	0,265 KG/Liter
FuelXcite	30%	0,795 KG/Liter





Consumption without FuelXcite: 3,20 l/10Km

Consumption with FuelXcite : 2,68 l/100Km

SAVINGS: 16%

CARBON MONOXIDE (CO) without FuelXcite r: 1,02%

CARBON MONOXIDE (CO) with FuelXcite : 0,28%

SAVINGS: 73,60 %

**THAILAND
SCOOTER HONDA
PCS 150**



Consumption without FuelXcite : 5,6 l/100Km

Consumption with FuelXcite : 4,5 l/100Km

SAVINGS: 19,64%

**GERMANY
TRACTOR HOLLAND T7050**



Consumption without FuelXcite : 15,00l/100Km

Consumption with FuelXcite: 11,10 l/100Km

SAVINGS: 20,00%

**SOUTH AFRICA
Land Rover Defender**

When a vehicle consumes one liter of petrol, it emits around 2.37 kilograms of CO₂.
If diesel was fueled, it is 2.65 kilograms of CO₂.



FuelXcite 

ECOPower solutions GmbH

Altwirthgasse 1, Top 2
1230 Vienna - Austria

info@ecopower.eu.com
www.ecopower.eu.com



ECO Power solutions 
ENVIRONMENT OPTIMIZATION